

PARKING SUMMARY	
REQUIRED PARKING:	1.0 PER 300 S.F. = 31 SPACES REQ.
PARKING PROVIDED:	54 TOTAL (INCL. 3 HANDICAP)

LAND USE DENSITY AND COVERAGE	
PROPERTY USE:	FIRE STATION
ZONING:	R1
LOT AREA:	251,498.59± S.F.
BLDG SIZE:	EX: 12,593.37 S.F. NEW: 9,300 S.F. TOTAL: 21,893.37 S.F.
IMPERVIOUS SURFACES:	132,079±
LOT COVERAGE:	52.52% (50% ALLOWED)
PARKING LOT AREA:	10,175±
LANDSCAPE AREA:	15,474±
LANDSCAPE COVERAGE:	20.26% (10% REQUIRED)



2803 River Road  
Yakima, WA 98902  
(509) 966-7000  
www.hlacivil.com

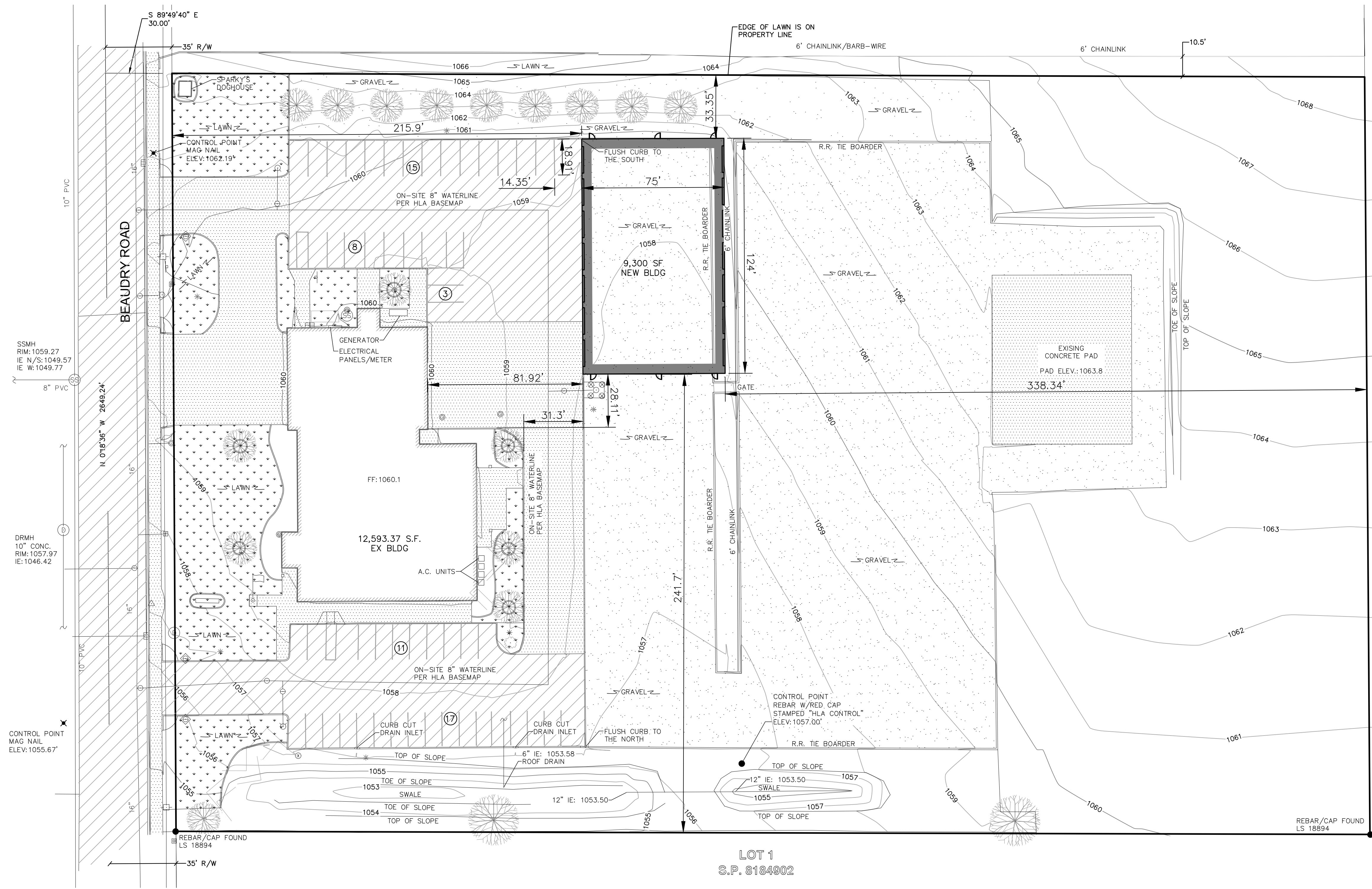
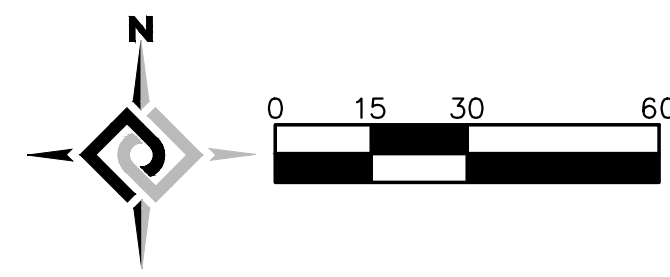
**PRELIMINARY**  
SUBJECT TO REVISION

REVISION	DATE	REVIEWED BY:	ENTERED BY:
		MRH	MDH

JOB NUMBER: 25176  
DATE: 12-05-25  
FILE NAMES: 25176.dwg

**YAKIMA COUNTY FIRE DISTRICT #4**  
YAKIMA COUNTY, WASHINGTON

SITE PLAN



PARKING SUMMARY	
REQUIRED PARKING:	1.0 PER 300 S.F. = 31 SPACES REQ.
PARKING PROVIDED:	54 TOTAL (INCL. 3 HANDICAP)

LAND USE DENSITY AND COVERAGE	
PROPERTY USE:	FIRE STATION
ZONING:	R1
LOT AREA:	251,498.59± S.F.
BLDG SIZE:	EX: 12,593.37 S.F. NEW: 9,300 S.F. TOTAL: 21,893.37 S.F.
IMPERVIOUS SURFACES:	132,079±
LOT COVERAGE:	52.52% (50% ALLOWED)
PARKING LOT AREA:	10,175±
LANDSCAPE AREA:	15,474±
LANDSCAPE COVERAGE:	20.26% (10% REQUIRED)

2803 River Road  
Yakima, WA 98902  
(509) 966-7000  
www.hlacivil.com

**PRELIMINARY**  
SUBJECT TO REVISION

REVISION	DATE	JOB NUMBER: 25176	DATE: 12-05-25
		FILE NAMES: DRAWING: 25176.dwg	
		REVIEWED BY: ENTERED BY:	MRH MDH

**YAKIMA COUNTY FIRE DISTRICT #4**  
YAKIMA COUNTY, WASHINGTON

SITE PLAN